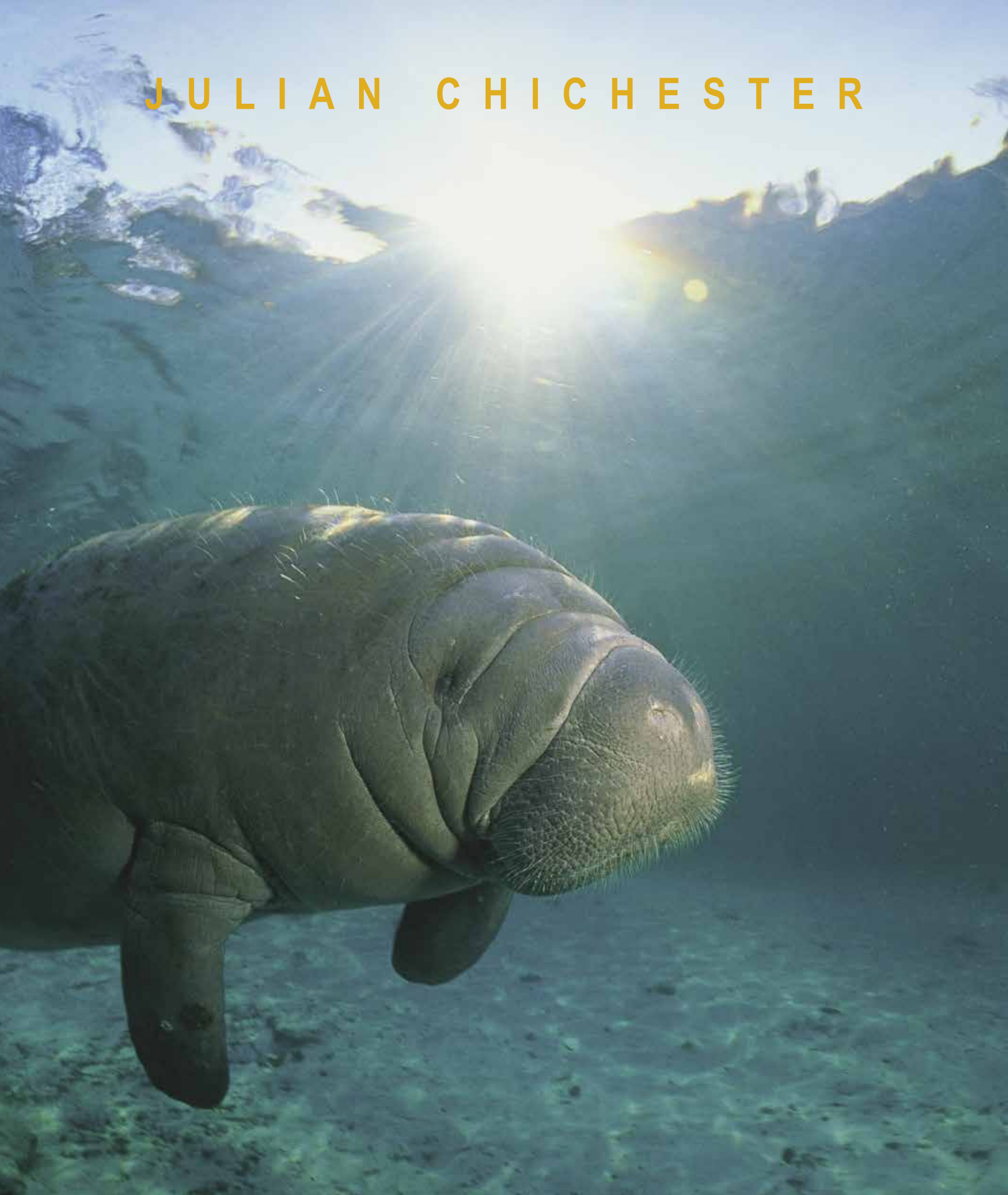


JULIAN CHICHESTER





L-R: Lauren Chair, Mondrian Bookcase,
Richter Floor Lamp, Turin Chair, Chianti Coffee Table

Creating timeless furniture

For over 20 years, Julian Chichester has created and built stunning furniture that derives its inspiration from the English classic tradition whilst adding a fresh, modern twist. The furniture has the personality to hold its own in any setting – it succeeds equally well in a Manhattan loft or an elegant Shoreditch townhouse.

The company has expanded its manufacturing operation through its continuing success in developing a range of ‘must-have’ classic and contemporary designs. An enviable international reputation for quality craftsmanship, innovative design and attractive, unusual, high-quality finishes and decoration is what sets the company apart from others.



INTRODUCTION	2
BEDSIDES	4
BEDS	8
BOOKCASES	10
CABINETS	14
CHEST OF DRAWERS	28
COFFEE TABLES	33
CONSOLE TABLES	43
DESKS & DRESSING TABLES	50
DINING TABLES	60
LIGHTING	70
MIRRORS	75
OCCASIONAL TABLES	84
UPHOLSTERY	92
– BENCHES	94
– CHAIRS	98
– SOFAS	110
COLOURIST COLLECTION	113
CONTACTS	119

- 1

GETTY NIGHTSTAND

This most unusual 1940s French inspired piece combines a vellum cabinet with inset verre eglomisé panels with gilded columns that support a glass top, also with an eglomisé detail. Available in either aged ivory vellum (1) or brown vellum(2) .

22.5w 19d 26.5h
- 2

- 5

GILBERT BEDSIDE

Faux shagreen is set in a Frank metal frame in this durable, stylish bedside that will also work well beside a sofa. Available in chocolate or dover white faux shagreen.

26w 17d 28h

Bottom Shelf 6h

- 6

BRIGHTON BEDSIDE

Perfect for a New York apartment or London pied à terre, this compact beside has beveled plain mirror on three sides, ebonized wood pulls and tapered legs. 3-drawer chest also available.

23.5w 18d 25.5h

- 4

MASSA BEDSIDE

The Massa bedside turns the ancient form of the Egyptian mastaba on its head. Embossed brass patterning on the drawer fronts lends a subtle luminescence to the exterior. Inside, our signature faux-red leather lining adds a surprising jolt of colour.

27.5w 17d 24h



Bedsides







1 JASPER BEDSIDE

Refined strokes define the Jasper bedside table. Available with a brass frame and eglomisé inset panels (1), or firmdale oak and ivory vellum inset panels (2). Vellum is a natural skin therefore colour variation is inevitable.

26w 18d 28h

Shelf 15w 17d 8h

3 TEMPLE 3-DRAWER BEDSIDE

This versatile bedside has ample storage within each of its veneered drawers. The wooden frame is finished in gold or antique silver leaf with inset eglomisé panels on three sides.

26w 17d 30h

4 TEMPLE 1-DRAWER BEDSIDE

Another iteration of the Temple series, the 1-drawer bedside features a wooden frame finished in gold or antique silver leaf with inset eglomisé panels on three sides.

26w 17d 28h

Bottom Shelf 7.5h

5 CAVELLE BEDSIDE

The single drawer Cavelle bedside table is composed of an elliptical drum poised on delicate, horn-shaped legs capped with brass ferrules. The shelf below adds stability and extra surface space. Available in aged brass (5) or ivory vellum (6) with firmdale oak. Vellum is a natural skin therefore colour variation is inevitable.

20w 14d 26h

Bottom Shelf 18.5w 12.5d 8.5h



Beds





2



3

- 1 DEMI FOUR-POSTER BED**
 Unique demi four-poster bed combining classical proportions with a pale gold frame and eglomisé headboard. Also in the Colourist Collection, finished to your specification.
 Eastern King 77w 86d 65h
 Queen 68w 86d 65h
 SPECIAL ORDER ONLY

- 2 ETIENNE BED**
 A stunning brass clad four-poster bed with tapered round posts, cast spiral finials and upholstered headboard.
 Eastern King 82.5w 89d 99h
 4 yards COM
 Queen 67w 89d 99h
 3 yards COM

- 3 TEMPLE BED & HEADBOARD**
 An impressive bed with eglomisé headboard and footboard edged in either aged silver or gold leaf.
 Eastern King 82.5w 90.5 63h
 Eastern King Headboard 84w 8d 63h
 Queen 71.5w 90.5d 63h
 Queen Headboard 72.5w 8d 63h
 SPECIAL ORDER ONLY

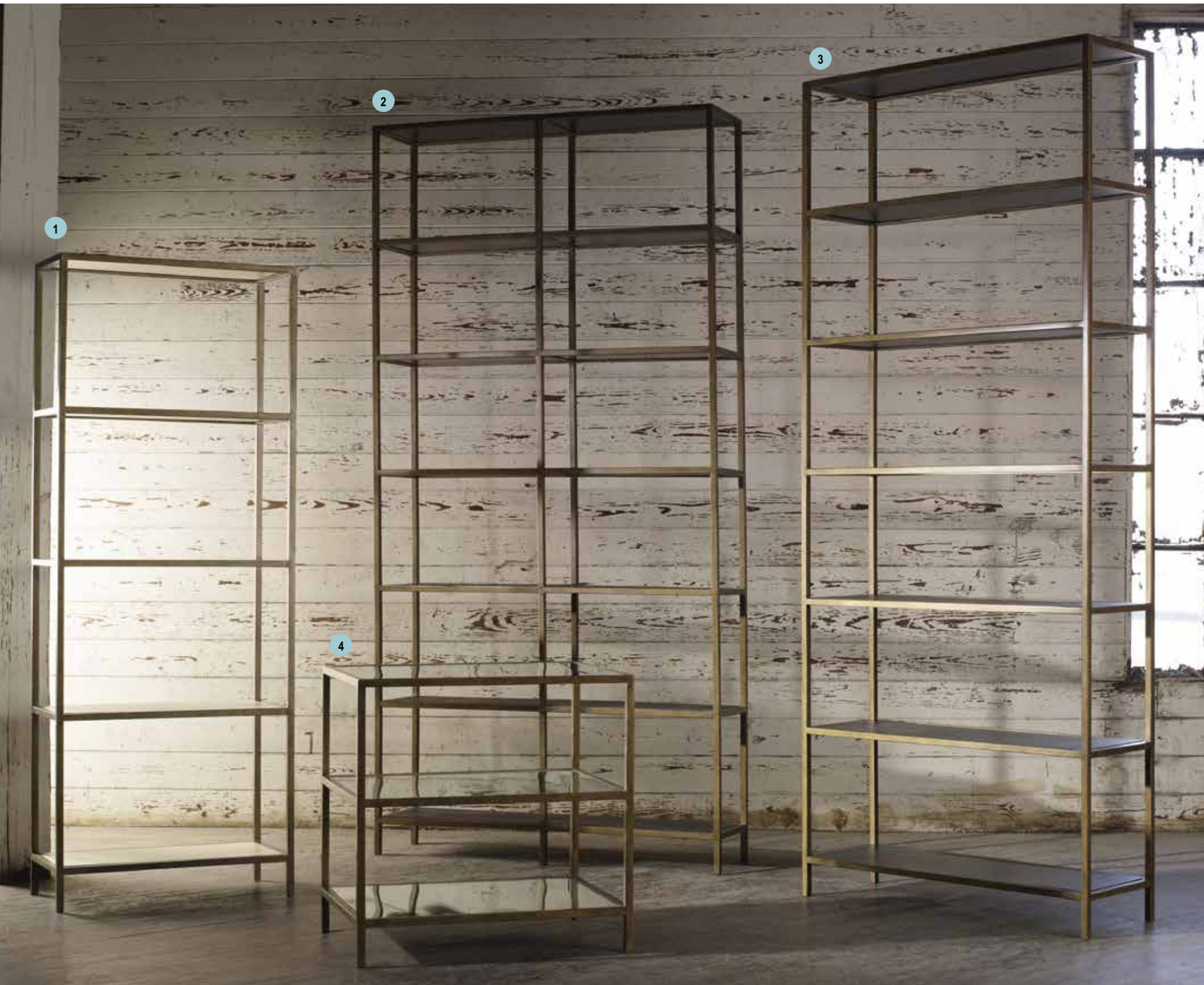


Bookcases



- 1 MONDRIAN BOOKCASE**
The horizontal and vertical lines of eight brass-wrapped, oak and vellum compartments are arranged with rhythmic calculation on a gilt metal frame. Standard in ochre vellum with two red vellum center compartments all lined in firmdale oak. Vellum is a natural skin therefore colour variation is inevitable.
Overall 71w 16d 86.5h
Each Compartment Interior 27.75w 13d 14.75h

- 2 BAY BOOKCASE**
This extra-wide bookcase has a lightly-scaled, Frank metal finished, simple frame that supports an asymmetric arrangement of drawers and shelves covered in variegated brown (1) or ivory vellum (2). Vellum is a natural skin therefore colour variation is inevitable.
59w 20d 79h



UNIVERSITY BOOKCASE

Our University series is minimal, yet thoroughly practical and elegant. The simple Frank metal frame has fixed inset shelves available in either ivory or black vellum, chocolate or ivory faux shagreen, frank leather or eglomisé. Vellum is a natural skin therefore colour variations are inevitable.

- 1 University 112 27w 13d 72h
Shelf Clearance 16h Shelves 5
- 2 University 108 47w 12d 94h
Shelf Clearance 16h Shelves 7
- 3 University 110 39w 13d 94h
Shelf Clearance 14h Shelves 7
- 4 University 116 28w 20d 28h
Shelf Clearance 10h Shelves 3

5 HENRI TALL BOOKCASE

A statuesque addition to the Henri series, this tall bookcase is a delightful maze of geometric, brass-wrapped shelves lined with cardinal or bark felt. A low version is also available.

Henri Tall 42w 14d 86.5h
Henri Low 51.5w 13d 34h



Cabinets

STORM CABINET

This meticulously hand-wrapped Storm Cabinet in corrugated nickel stands on five circular brass feet and has an inset aged mirror top. Two interior compartments are lined in sycamore and include two adjustable shelves.

87w 20d 29.5h

Interior 41.5w 17d 23.5h







1 STORM CABINET
Our original Storm cabinet is hand-wrapped in corrugated brass and stands on five circular brass feet. Two interior compartments are lined in sycamore and include two adjustable shelves.
87w 20d 29.5h
Interior 41.5w 17d 23.5h

2 TWISTER CABINET
A long 4-door cabinet with a corrugated angular profile sitting on curved, gilded metal legs. Two interior compartments each have two adjustable shelves. In waxed white oak (2) or firmdale oak (3) finish.
86.5w 21.5d 29.5h
Interior 41.5w 17d 23.5h





4 ELGIN CABINET

This cabinet features an elegant, gently curved façade in black (4) or aged ivory (5) vellum that is trimmed at the top and bottom in aged brass. Featuring four center drawers with brass pulls flanked by two large storage areas, each with two adjustable shelves. Vellum is a natural skin therefore colour variation is inevitable. Also available as part of the Colourist Collection finished to your specification.

Overall 79w 23.5d 32h

Interior Sides 25w 21d 25.5h

Interior Drawers 10.5w 15d

1



2





3



4



5

1 GETTY 2-DOOR CABINET

Completely clad in hand-finished brown or ivory vellum with aged brass trim and solid brass vintage-style feet. The interior is lined in sycamore veneer and comes with two adjustable shelves and four sliding media outlets. Vellum is a natural skin therefore colour variation is inevitable.

Overall 59.5w 19.5d 29.5h
Interior 56w 17.5d 22h

2 VADIM LOW CABINET

A striking firmdale oak and ivory vellum 3-door cabinet with waves of overlaid brass rests on quirky brass feet. Includes two adjustable sycamore shelves within each interior compartment. Vellum is a natural skin therefore colour variation is inevitable.

Overall 59w 22.25d 30.5h
Outer Sections Interior 18.5w 21.25d 25h
Center Section Interior 17.75w 21.25d 25h

3 FELIX TALL MEDIA CABINET

A 2-piece media cabinet offered in black vellum with firmdale oak or ivory vellum with light oak limed finish, resting on a Frank metal base. The sycamore lined interior has three adjustable shelves. Vellum is a natural skin therefore colour variation is inevitable.

Overall 59w 21.5d 89h
Top Interior 54.5w 18.5d 48.5h
Bottom Interior 59w 21.5d 39h
SPECIAL ORDER ONLY

4 POLLOCK VELLUM CABINET

Paneled vellum doors sit on a Frank metal base above a fixed shelf. Includes three adjustable shelves within. Offered in black vellum with firmdale oak or ivory vellum with light oak limed finish. Vellum is a natural skin therefore colour variation is inevitable.

Overall 51w 20.5d 66h
Interior 48.5w 19d 44.5h
Bottom Shelf 7h

5 VADIM TALL CABINET

A tall version of the Vadim series in firmdale oak and ivory vellum with waves of overlaid brass on the doors and an aged brass frame and shelf below. Two adjustable sycamore shelves are within. Vellum is a natural skin therefore colour variation is inevitable.

Overall 44w 26.25d 66.75h
Interior 41.5w 24.25d 44.75h





1 DANISH 4-DOOR CABINET
The Danish cabinet is a true classic. Built of oak with vellum touch-latch doors, it has four media outlets and two adjustable shelves. Resting on two metal arched legs finished in aged gold, it is available with either firmdale oak with black vellum doors (1) or light oak limed with ivory vellum doors, or a natural vellum surround with brass fishscale etched doors (3). Vellum is a natural skin therefore colour variation is inevitable.

89w 21.5d 29.5h
Each Compartment Interior 35w 19d 22.5h

2 DANISH 2-DOOR CABINET
A 2-door version of our popular Danish cabinet. Available in firmdale grey oak with black vellum touch-latch doors, or light limed oak and ivory vellum doors. With two adjustable shelves and four media outlets. Vellum is a natural skin therefore colour variation is inevitable.

59w 21.5d 29.5h
Interior 41.5w 21.5d 22.5h







3



2

1 ABBADO CABINET

This firmdale oak cabinet features raised concentric circles on aged brass panel doors, making a graphic and dramatic statement. Upper and lower compartments lined in our red faux-leather provides excellent storage.

Overall 50.5w 18.25d 93h
Top Interior 47.5w 16.5d 56h
Base Interior 47.5w 16.5d 29h

2 CIRCLES TALL CABINET

A pattern of intersecting circles form the design motif of this handsome tall cabinet with five adjustable interior shelves. Available in bleached or black stained oak on aged mirror doors.

Overall 47w 16d 95h
Top Interior 45.5w 14d 61h
Base Interior 45.5w 14d 26h

3 CIRCLES LONG CABINET

A long, low version, the circles motif in bleached or black stained oak intersect across four doors of aged mirror, with four adjustable interior shelves.

Overall 86.5w 21.5d 31.5h
Interior 47.75w 20.5d 26h



1

1 KLEE CABINET

A simple cabinet perfectly scaled for an office or loft apartment, the touch-latch doors conceal two compartments each with an adjustable shelf. Available standard in firmdale oak with black vellum doors or white matte lacquer with cerused oak doors, which is also part of the Colourist Collection. Vellum is a natural skin therefore colour variation is inevitable.

Overall 59w 21d 31.5h

Interior Right 18w 18d 26.25h

Interior Left 37.5w 18d 26.25h

2



FRY CABINET

Ordinarily the embossed fishscale pattern on the brass doors and detailed feet would be the star, but our vibrant ochre vellum is the scenestealer here. Fully sycamore veneered interior includes two drawers lined in red faux leather. Also available in black vellum. Vellum is a natural skin therefore colour variation is inevitable.

Overall 57w 20d 31.5h

Each Compartment Interior 27w 19d 20h

Interior Drawers 23w 13d 3h



1 ANNA TALL CABINET
An attractive full-height cabinet with eglomisé doors behind an Arts and Crafts inspired lattice in bleached or black stained oak finish. With two adjustable shelves inside the base section and four in the top compartment.
Overall 55w 16d 82h
Top Interior 49w 13d 47.5h
Base Interior 53w 15d 26.5h

2 ANNA 2-DOOR LOW CABINET
This pretty cabinet has eglomisé doors behind an Arts and Crafts inspired lattice. The simple rectangular shape sits on square tapered legs. Available in bleached or black stained oak with three internal shelves per compartment.
Overall 61w 20.5d 34h
Two Compartments, Each 27.5w 19d 28.5h

3 ANNA 3-DOOR LOW CABINET
A 3-door interpretation of the popular Anna low cabinet. Includes a set of three drawers each on the left and right sections and two adjustable shelves in the middle. Available in bleached oak or black stained oak.
Overall 91.5w 20.5d 34h
Center Section Interior 30w 18.5d 29h





4



5



6

4 ROYERE TALL CABINET

This collection honors the French designer, Jean Royère. The tall cabinet is trimmed with aged brass, as is the platform base, and offered in either variegated brown vellum inset in wenge brown finished panel doors, or ivory vellum inset in firmdale oak doors. The interior is lined with sycamore. Vellum is a natural skin therefore colour variation is inevitable.

Overall 48w 17d 93.5h

Top Interior 46w 15.5d 57.5h

Base Interior 46w 15.5d 28.5h

5 ROYERE 2-DOOR CABINET

Overall 39.5w 17.5d 32h

Interior 37.5w 16.5d 25.5h

6 ROYERE 4-DOOR CABINET

Overall 87w 21.5d 30h

Each Compartment Interior 42.5w 20.5d 24h



Chests of Drawers





2



3

1 BALTHAZAR CHEST

A wonderfully exaggerated four-drawer Bow Chest wrapped in a subtle non-variegated black or cloudy brown vellum. Vellum is a natural skin therefore colour variation is inevitable.

47w 23.5d 33.5h

3 REGENCY WAVE CHEST

A stunning classically inspired wave fronted chest with contrasting brass handles. This piece is part of the Colourist Collection, finished to your specification.

43w 22d 33h

2 PTOLEMY CHEST

Faux shagreen and contemporary hardware modernize this dramatic adaptation of a 19th century inverted bow chest. Available in ivory faux shagreen with aged brass hardware or chocolate with nickel hardware. Vellum is a natural skin therefore colour variation is inevitable.

41.5w 23d 33.5h





2



3



4

1 MASSA CHEST

The Massa chest turns the ancient form of the Egyptian mastaba on its head. Embossed brass patterning on the drawer fronts contrast with firmdale oak on the exterior. Inside, our signature red faux-leather lining adds a surprising jolt of colour.

38w 17d 31h

2 BRIGHTON CHEST

This 3-drawer chest is perfect for a New York apartment or London pied à terre. Featuring beveled plain mirror on three sides, ebonized wood pulls and tapered wood legs, similar to its companion bedside.

41w 18d 33h

3 TEMPLE CHEST

Evoking instant elegance with its eglomisé top and sides, inset within a molded wood frame, this 3-drawer chest has self-closing drawers and is available in either antique silver or gold leaf.

43w 17.5d 33.5h

4 PERCY CHEST

Our Percy chest's neoclassical shape is updated for the 21st century in bleached ivory vellum with three concave brass drawers and brass legs.

43w 19.75d 33h



- 1 RICHTER CHESTS
- 2 A new classic, the Richter chest is wrapped in a black pebble grain leather with saddle-stitched detail on the legs and drawers, with aged brass accents. Part of a larger series of tables, desks and lighting.

Richter Large (1) 47.25w 21.75d 31.5h
 Drawer Interior 39w 14.5d 4.5h
 Richter Small (2) 39w 21.75d 31.5h
 Drawer Interior 30.5w 14.5d 4.5h

Coffee Tables

DALI COFFEE TABLE

Heavy scale and crisp lines of this 1970s inspired table reduces it to pure form. The bleached or black vellum finish adds tactile warmth to the minimalist aesthetic. An eglomisé insert on the bottom shelf and border on the plain glass top add a touch of sparkle. Vellum is a natural skin therefore colour variation is inevitable.

51w 31.5d 18h

Between Shelves 12h





1 COPPER COFFEE TABLE
An industrial look that feels refined through the use of hand-clad copper with riveted seams. Each table will have a unique appearance due to the nature of the materials and the individually crafted process.
47w 26d 18h

2 ROSE COFFEE TABLE
Unusual infinity-shaped coffee table finished in a cloudy brown (2) or black vellum (3) resting on a recessed plinth base. Vellum is a natural skin therefore colour variation is inevitable.
47w 23.5d 17.5h



TEMPLE COFFEE TABLE

A striking verre églomisé paneled coffee table with contrasting antiqued gold or silver leaf wood frame. Temple small benches fit under the large rectangular coffee table only.

Square 47w 47d 20h

Small Rectangular 43w 24d 20h

Large Rectangular 48w 26d 19.5h



1

1 SAVOY COFFEE TABLE

Two vertical natural or black vellum-wrapped panels intersect with an eglomisé shelf and clear glass top in this sophisticated coffee table. The top edge and subtle arch detail are clad in aged brass. Vellum is a natural skin therefore colour variation is inevitable.

59w 31d 14.5h

2 MARCEL COFFEE TABLE

The Jean Royère inspired frame of this coffee table has undulating aged brass legs capped with spheres, supporting an amply-scaled ochre or black vellum top. Vellum is a natural skin therefore colour variation is inevitable.



2

51w 92.5d 20h



3



4

- 3 GARCON COFFEE TABLE**
Functional and beautiful, the 2-tiered brass frame appears to float, although it rests on a recessed brown vellum base. The lower eglomisé shelf adds additional surface space. Vellum is a natural skin therefore colour variation is inevitable.

(3) Square 47.25w 47.25d 18h
Shelf Clearance 8h

(4) Rectangular 59w 31.5d 18h
Shelf Clearance 8h



1 RICHTER COFFEE TABLE

A new classic, the Richter coffee table is wrapped in a red (1) or black (2) pebble grain leather with saddle-stitched detail on the legs. Part of a larger series of chests, desks and lighting.

51.5w 31.5d 18h





3



4

3 JASPER COFFEE TABLE

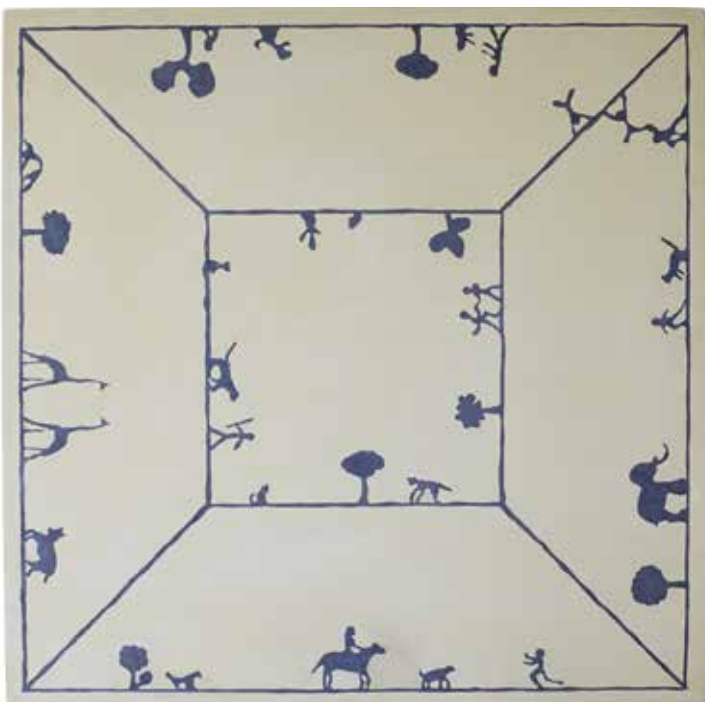
Refined strokes define the Jasper coffee table.

- 4 With its firmdale oak and contrasting bleached vellum inset panels (3) or brass frame and eglomisé inset panels (4), the materials lend warmth to an otherwise minimalist statement. Vellum is a natural skin therefore colour variation is inevitable.

54w 28d 18h

Bottom Shelf 6h





1 RENE COFFEE TABLE

An Art Deco inspired waterfall edge coffee table. Available in dover white or chocolate faux shagreen with a distressed silver leaf underside.

43w 26d 20h

2 FRANK COFFEE TABLE

After Jean Michel Frank, this classic coffee table is available in Frank leather, chocolate or ivory faux shagreen inset into a Frank metal finished frame.

Small 47w 17.5d 18h

Large 48w 32d 18h

3 BELLINI COFFEE TABLE

Referencing the bold textile patterns of the 1960s, this quirky coffee table has a playful brass design over ivory vellum. It is encased in glass and framed in firmdale oak, making it an effortless way to live with natural materials. Vellum is a natural skin therefore colour variation is inevitable.

Small 59w 20d 18h

Large 54w 32d 18h

4 CHIANTI COFFEE TABLE

This scagliola coffee table with inspirations from a 1950s Giacometti carpet has a complex texture and vibrant color that are bold enough to anchor an entire room. Mounted on a simple gesso base with hoop feet.

44w 44d 18.75h



1



2



3

1 JEAN MARC COFFEE TABLE

Inspired by an elegant, vintage French étagère, our Jean Marc pieces exude a mid-century modern feel with an up-to-date sensibility. The gently rippled and gilded steel frame is inset with brown vellum panels. Desk and console also available. Vellum is a natural skin therefore colour variation is inevitable.

54w 32d 18h

2 TRIBECA 2-TIER COFFEE TABLE

This Art Deco inspired coffee table takes on a second life in its bleached aged oak finish. Open grain rift sawn oak is diamond matched on the top and shelf.

39dia 18h

3 CORTES COFFEE TABLE

This beautifully stylish coffee table has classic mid-century lines. The top is wrapped in variegated brown (1) or black vellum with Cortes gold finished steel legs. There are four sycamore lined drawers. Vellum is a natural skin therefore colour variation is inevitable.

54w 32d 19h

Console Tables



TRIANGLE CONSOLE TABLE

A beautiful contrast exists between the rough firmdale oak base and the smooth black vellum top of this minimalist console. Also available entirely in black stained oak. Vellum is a natural skin therefore colour variation is inevitable.

71w 17.5d 34.5h





6

1 CORTES CONSOLE TABLE
This beautifully stylish console has classic mid-century lines. The top is wrapped in variegated brown (1) or black vellum with Cortes gold finish steel legs. There are four sycamore lined drawers. Vellum is a natural skin therefore colour variation is inevitable.
58w 16d 33h

2 FRANK 2-DRAWER CONSOLE TABLE
A classic console table with two drawers, within a subtle Frank metal frame. Available in Frank leather and chocolate, ivory or dover white faux shagreen.
35w 14d 33h

3 FRANK 3-DRAWER CONSOLE TABLE
A classic console table with three drawers, within a subtle Frank metal frame. Available in Frank leather and chocolate, ivory or dover white faux shagreen.
51w 14d 33h

4 FRANK CONSOLE TABLE
Another version of the Frank console, combining a subtle Frank metal frame with Frank leather, ivory (4) or chocolate faux shagreen (5) top.
Standard 35w 14d 33h
Large 51w 14d 33h

6 GARCON CONSOLE TABLE
Functional and beautiful, the 2-tiered brass frame appears to float, although it rests on a recessed brown vellum base. The lower eglomisé shelf adds additional surface space.
51w 15d 32.75h

7 LINWOOD DEMILUNE CONSOLE TABLE
An elegant demilune table available in gold bronze with ivory vellum, silver bronze with black vellum, frank metal with ivory vellum, Frank metal with black vellum or antique silver leafed with black vellum. Vellum is a natural skin therefore colour variation is inevitable.
32w 16d 32h
Bottom Shelf 24w 11d 7h



7



8

1



2



1 RENE CONSOLE TABLE

Art Deco inspired waterfall edge console table with single drawer and brass detail. Available in chocolate (1), or dover white faux shagreen (2) with a distressed silver leaf underside. Vellum is a natural skin therefore colour variation is inevitable.

51w 14d 33.5h

3 JEAN MARC CONSOLE TABLE

Inspired by an elegant, vintage French étagère, our Jean Marc pieces exude a mid-century modern feel with an up-to-date sensibility. The gently rippled and gilded steel frame is inset with hand-finished brown vellum panels. Desk and coffee table also available. Vellum is a natural skin therefore colour variation is inevitable.

53.5w 14d 34h

4 RAVEL CONSOLE TABLE

The tapered aged brass leg of the Ravel console boldly dominates the smooth simplicity of the bleached ivory (4) or black vellum top. The three drawers are lined in red faux-leather. Vellum is a natural skin therefore colour variation is inevitable.

59w 16d 33h

Drawer Interior 15w 12.5d 1.5h

3



4





5



6



8



7

5 TEMPLE CONSOLE TABLE

A stunning verre eglomisé paneled console table with contrasting gold or antique silver leaf wood frame and undersides. Part of a series of bedsides, benches, coffee tables and mirrors.

(5) Large 51w 14d 33h

(6) Small 32w 12d 33h

7 TEMPLE 2-DRAWER CONSOLE TABLE

A verre eglomisé paneled 2-drawer console table with contrasting gold or antique silver leaf wood frame and undersides.

31.5w 12d 33.5h

8 TEMPLE 3-DRAWER CONSOLE TABLE

A verre eglomisé paneled 3-drawer console table with contrasting gold or antique silver leaf wood frame and undersides.

52w 14d 33h



1 ONEGIN CONSOLE TABLE
Look at things from a new angle with this geometrically bold design. Trapezoidal aged brass legs and a contrasting firmdale grey oak top combine to make a statement that cannot be ignored. Vellum is a natural skin therefore colour variation is inevitable.
59w 16d 33h
Drawer Interior 14.5w 12d 1.5h

2 OLIVER CONSOLE TABLE
Adapted from our Frank collection, this long console has a subtle tapered Frank metal frame with ivory or chocolate faux shagreen inset shelf panels. Vellum is a natural skin therefore colour variation is inevitable.
71w 16d 33.5h
Shelf 5h

3 BELLINI CONSOLE TABLE
Referencing the bold textile patterns of the 1960s, this quirky console table has a playful inlaid brass design over natural vellum. It is encased in glass and framed in firmdale oak, making it an effortless way to live with natural materials. Vellum is a natural skin therefore colour variation is inevitable.
65w 15d 33h



4



5



6

4 MARCEL CONSOLE TABLE
The Jean Royère inspired frame of this console has undulating an aged brass base capped with spheres, supporting the ochre or black vellum top. Vellum is a natural skin therefore colour variation is inevitable.
59w 16d 34h

5 JASPER CONSOLE TABLE
Refined strokes define the Jasper console table. Available with a brass frame and eglomisé inset panels (5), or firmdale oak and ivory vellum inset panels (6). Vellum is a natural skin therefore colour variation is inevitable.
59w 16d 32.5h
Bottom Shelf 10h
Drawer Interior 9.5w 12.5d 1h

Desks & Dressing Tables





2

1 MARCEL DESK

The Jean Royère inspired frame of this desk has an undulating aged brass base capped with spheres, supporting the ochre or black vellum top, with three drawers. Vellum is a natural skin therefore colour variation is inevitable.

72w 35.5d 30h

Chair Clearance 26.5h

2 JEAN MARC DESK

Inspired by an elegant, vintage French étagère, our Jean Marc pieces exude a mid-century modern feel with an up-to-date sensibility. The gently rippled and gilded steel frame is inset with brown vellum panels. Coffee and console tables also available. Vellum is a natural skin therefore colour variation is inevitable.

63.5w 31.5d 31h

Chair Clearance 27h

3 ALBERT DESK

This simple desk with tapered legs is finished in fumed oak with three ivory vellum drawers with brass hardware. Adapted from a 1940s original, this is the perfect writing desk in a living area or bedside. Vellum is a natural skin therefore colour variation is inevitable.

47w 26d 30h

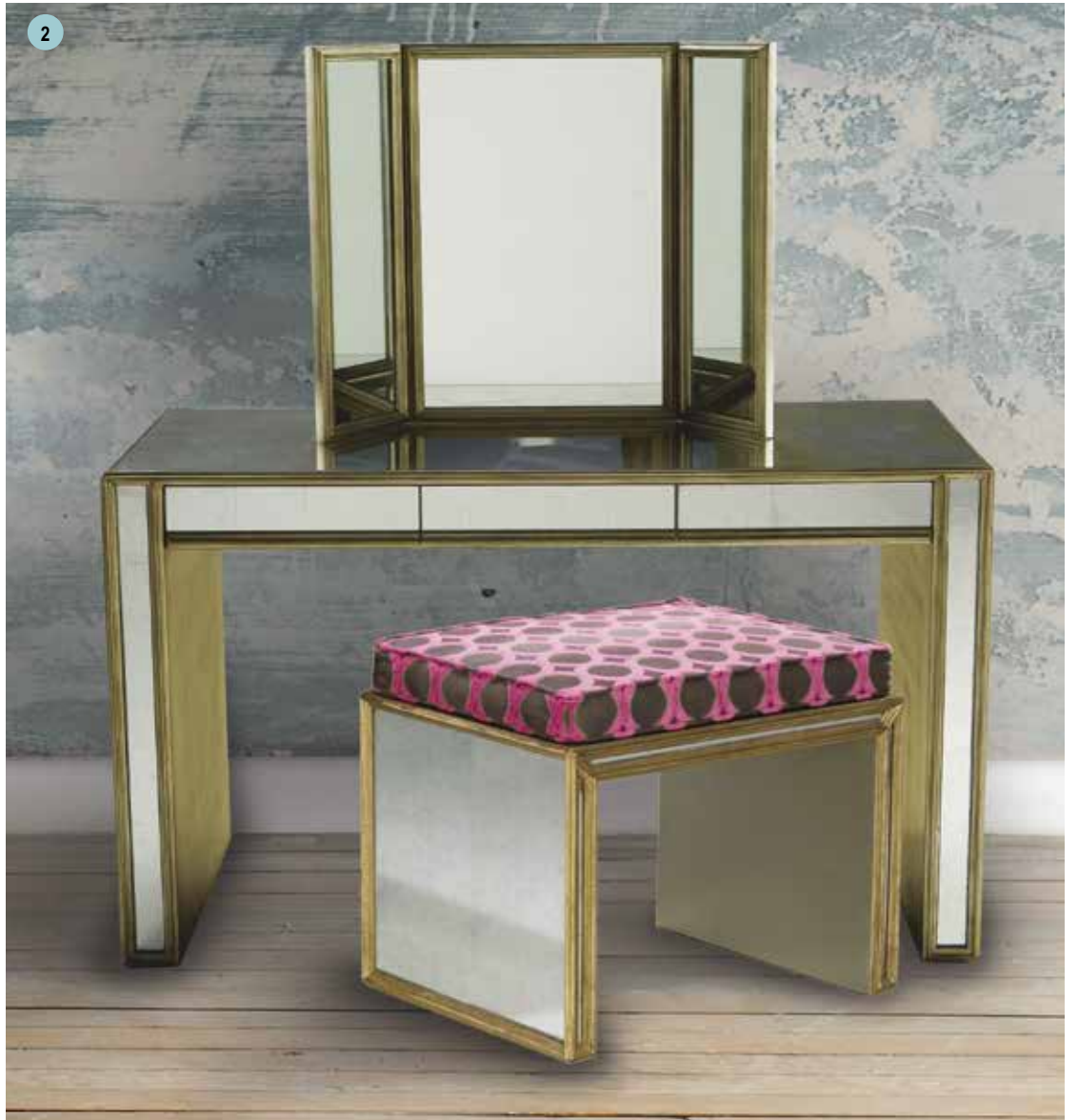
Chair Clearance 25h



3



1 GOLLUT DRESSING TABLE
A contemporary mirrored dressing table with two drawers, inspired by an East Coast original. Plain mirrored surfaces are combined with ebonized legs, pulls and drawers lined in oak.
35.5w 18d 31h
Chair Clearance 29.5w 18.5d 23h



2 TEMPLE VANITY
An eglomisé paneled dressing table with a contrasting gold or antique silver leaf wood frame and undersides. Matching stool has a tightly upholstered seat with folded corner detail.
51w 24d 30h
Mirror 32w 0.75d 24h
Stool 24w 19d 20h
COM 1 yard
Chair Clearance 25.5h



3 FRANK DESK
This 1940s inspired desk is available in light oak limed, dark oak limed or firmdale oak finishes, all with ivory vellum drawers and writing blotter. Vellum is a natural skin therefore colour variation is inevitable.
44w 26.5d 32.5h
Chair Clearance 38.5w 24h



- 4 CORTES DESK**
A stylish desk that appears elegantly simple, but offers enough surface for serious work. The top is wrapped in black (4) or brown vellum (5) and rests on square steel legs finished in Cortes gold. Four drawers with brass pulls are framed by a beveled detail, the only articulation of an otherwise streamlined statement. Vellum is a natural skin therefore colour variation is inevitable.
- Small 59w 28d 30h
Large 72w 35.5d 30h
Chair Clearance 26h





1 ONEGIN DESK

Look at things from an exciting new angle with this geometrically bold design. Trapezoidal aged brass legs and contrasting firmdale oak top (1) combine with red faux-leather lined drawers (2) to make a statement that cannot be ignored. Vellum is a natural skin therefore colour variation is inevitable.

59w 27.5d 29.5h

Chair Clearance 26w 25.5h

3 HASLEV DESK

A wonderful clean-lined desk in diamond-matched santos rosewood veneer with four drawers faced in ivory vellum, with brass faux escutcheons. The perfect desk for any library or living room. Vellum is a natural skin therefore colour variation is inevitable.

59.5w 29.5d 30h

Chair Clearance 25h







1

1 RAVEL DESK

The tapering, aged brass leg of the Ravel desk boldly dominates the smooth simplicity of the bleached ivory (1) or black vellum top. The three drawers are lined in red faux-leather. Vellum is a natural skin therefore colour variation is inevitable.

59w 30d 30h

Chair Clearance 39.5w 26h

Shown with vintage Moller rosewood chair

2 RICHTER DESK

A new classic, the Richter desk has saddle-stitched detail on the frame and legs. Available with black leather frame and red leather top (2) or red leather frame (3) with a black leather top (4). Part of a larger series of tables, chests and lighting.

63w 31.5d 31h

Chair Clearance 56.5w 27h





- 1 **BANANA DESK**
 - 2 A striking Deco-inspired desk with aged brass accents on its five drawers and curved, concealed compartment at one end. Two open bookshelves on the opposite side complete the asymmetrical design. The desk is finished in firmdale oak with a black top of either leather or vellum. Vellum is a natural skin therefore colour variation is inevitable.
- 58w 30d 30h
Chair Clearance 25h





3



4

3 JANE CHURCHILL CURVED DESK
This diminutive desk, scaled down from a 1940s original, still offers plenty of storage. The concave frame is in black limed oak (3) or covered entirely in black vellum (4). The eight self-closing drawers have brass pulls. Vellum is a natural skin therefore colour variation is inevitable.
60w 26.5d 30.5h
Chair Clearance 29h
Shown with vintage desk chair



Dining Tables

DAKOTA TABLES COLLECTION

Inspired equally by Eero Saarinen and Constantin Brâncuși, the beautiful Dakota table, with its oval or round wooden top, has become a classic unto its own. The base is offered in a shimmering polished nickel, or subtle antiqued nickel, to support a variety of standard sized wood, glass or Colourist lacquer tops. The base only is available in three sizes to accommodate our tops, or most custom sizes of your choosing.





- 1 DAKOTA OVAL TABLES**
Standard oval wooden table top finishes are black stained oak, firmdale oak or santos rosewood. We can accommodate most size and finish customizations to order. Also available as part of the Colourist collection, finished to your own specification.
- Standard Oval Top 78w 39d
Large Oval Top 96w 48d
Extra Large Oval Top 120w 60d
- All oval tops with STANDARD bases 30h
All oval tops with LARGE bases 29h

- 2 DAKOTA ROUND TABLES**
Standard circular wooden table top finishes are black stained oak, firmdale oak or santos rosewood. We can accommodate most size and finish customizations to order. Also available as part of the Colourist collection, finished to your own specification.
- Standard Round Top 48dia
Large Round Top 54dia
Extra Large Round Top 60dia
Super Large Round Top 72dia
- All round tops with STANDARD bases 30h
All round tops with LARGE bases 29h





3 DAKOTA WOOD-TOP TABLE BASES
The bases are hollow and can be filled to increase the weight. The tops are unfinished to allow the wooden table top to be attached. Full details follow on page 65.

Standard Base Overall 24.5w 24.5d 28h
Standard Base Top Plate 28w 18d

Large Base Overall 35.5w 35.5d 27h
Large Base Top Plate 43w 28d

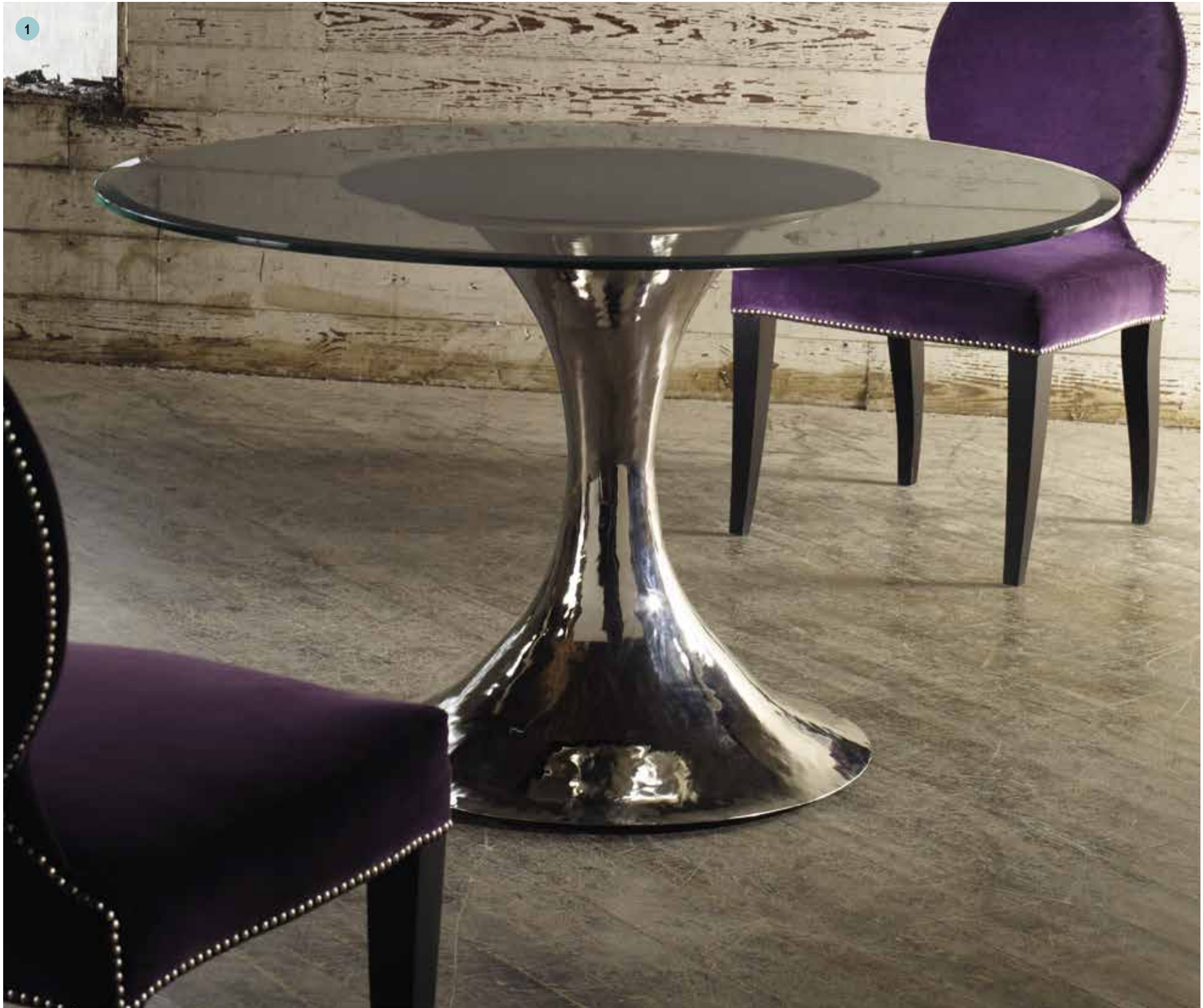
Breakfast Base 20dia 29h
Breakfast Base Top Plate 20dia

4 DAKOTA BREAKFAST TABLE
Standard 48" diameter round wood veneer top finishes are black stained oak, firmdale oak or santos rosewood. Also available as part of the Colourist collection, finished to your own specification.

Standard Round Top 48dia 30h
Narrow Base 20dia

4





1 DAKOTA GLASS TABLES
 The round or oval glass table tops have a diamond pattern eglomisé center on the underside, to hide the felt-topped base upon which it rests.

We can accommodate some size and finish customizations to order.

Standard Round Top 48dia
 Large Round Top 54dia
 Extra Large Round Top 60dia

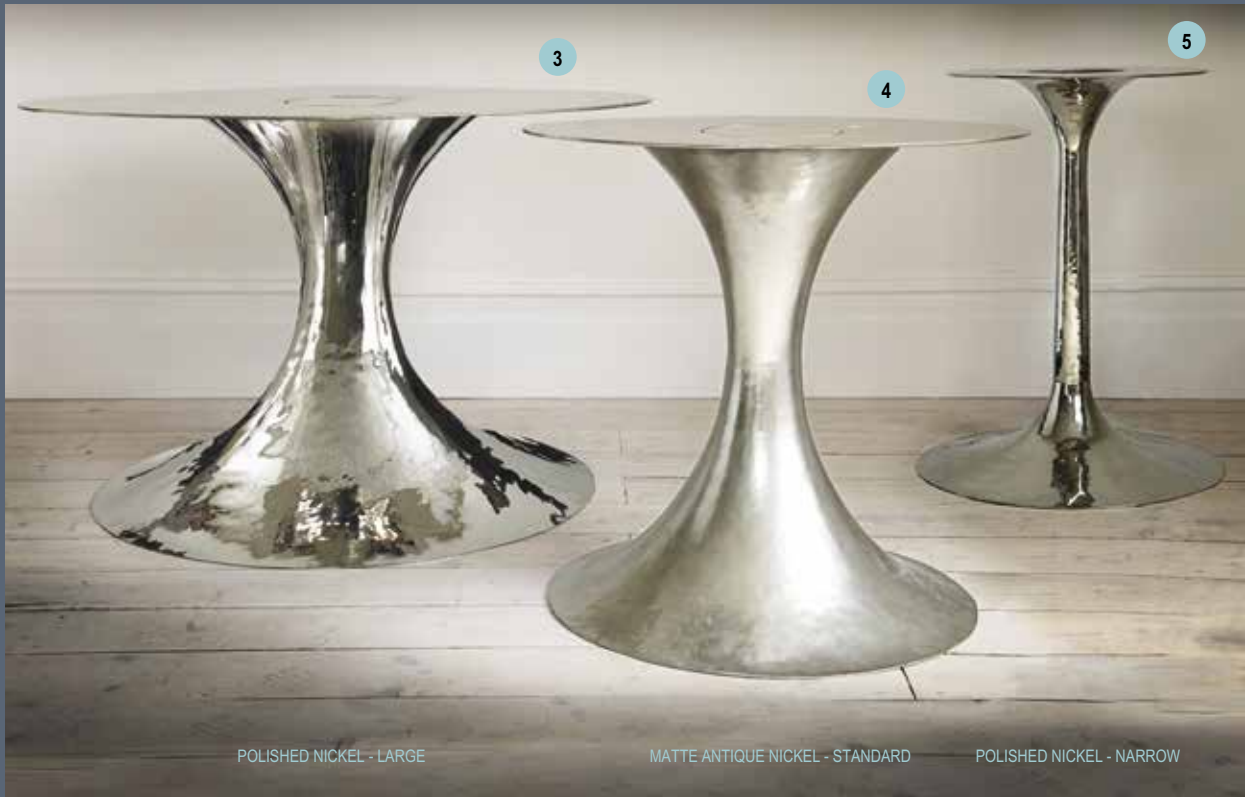
Standard Oval Top 78w 39d
 Large Oval Top 96w 48d

All glass tops with STANDARD bases 29.5h

2 DAKOTA GLASS TABLE BASES
 The base top plate is covered in black felt, hidden beneath the diamond patterned eglomisé center detail of the glass table top. The table top simply rests on the base.

Standard Base Overall 24.5dia 27h
 Standard Base Felted Top Plate 22dia





POLISHED NICKEL - LARGE

MATTE ANTIQUE NICKEL - STANDARD

POLISHED NICKEL - NARROW

Bases for Wood Table Tops

DAKOTA WOOD-TOP TABLE BASES

The bases are supplied hollow and can be filled to increase the weight. The top plates are unfinished to allow the wood table top to be attached. Bases available in polished nickel (3) or matte antiqued nickel (4) finish.

- 3 Large Base Overall 35.5w 35.5d 27h
Large Base Top Plate 43w 28d
- 4 Standard Base Overall 24.5w 24.5d 28h
Standard Base Top Plate 28w 18d
- 5 Breakfast Base 20dia 29h
Breakfast Base Top Plate 20dia



POLISHED NICKEL



MATTE ANTIQUE NICKEL

Bases for Glass Table Tops

DAKOTA GLASS TABLE BASES

- 6 The top plates are covered in black felt, hidden beneath the diamond patterned eglomisé center of the glass table top. The table top simply rests on the base (2). Bases available in polished nickel (5) or matte antiqued nickel (6) finish.
- 7

Standard Base Overall 24.5dia 27h
Standard Base Felted Top Plate 22dia





1 TAMBOUR DINING TABLE BASE

The sleek cylindrical base of the Tambour table makes a distinguished statement that is perfect for small spaces such as a New York apartment. The sole ornamentation is a subtle vertical reveal on opposite sides of the drum base. Available with a variety of top diameters and finishes or as base only. Shown here with a custom Colourist top. Tops and bases sold separately.

Wood Tops 48 / 54 / 60 / 72dia

Base 27dia 28h

2 ISLAND DINING TABLE BASES

These independent, gently curved arcs of aged brass (3) may be placed to form not only dining tables, but consoles or desks as well. Sold as a pair, they work perfectly with our Colourist tops (2).

Base 27.5w 8.5d 28h



1 CORTES DINING TABLE
 An elegant tabletop wrapped in vellum rests on square steel legs finished in Cortes gold. Faux or functioning beveled drawers with brass pulls line both sides of the top. Vellum is a natural skin therefore colour variation is inevitable.
 Standard 72w 48d 30h
 Large 96w 48d 30h
 Extra Large 120w 48d 30h
 SPECIAL ORDER ONLY

2 CORTES TABLE BASES
 Our classic Cortes series is more versatile than ever with this set of bases rescaled to dining or console table heights. Finished in Cortes gold, these bases can be combined with a variety of custom tops in any configuration. Shown here paired with a custom Colourist collection top.
 26.5w 11d 28.5h





3 PRINTZ DINING TABLE

Reimagined in a contemporary styling, the sweeping, streamlined silhouette of the Printz dining table updates a classic 19th century shape for the modern world. Standard in firmdale oak with inset brown vellum top. Vellum is a natural skin therefore colour variation is inevitable.

Overall 59dia 31h

Base 34.5w 34.5d 28h

Lighting

EDISON BASE x1

MAX 60W



- 1 FLIP LARGE FLOOR LAMP**
A bold scale aged brass floor lamp, also as a table version. Integral shade.
37w 34d 74h
FINISH: Aged Brass
- 2 BASTIDE LAMP**
A modern adaption of a late 1950s floor lamp. Gentle atmospheric light is achieved through the three perforated lamp heads that are positioned for a dramatic but practical effect. All pieces are made by hand for an individual vintage appearance and finished with an aged silver or gold finish. Integral shades.
LARGE SECTION 17w 17d 66.5h
MEDIUM SECTION 17w 17d 56.5h
SMALL SECTION 17w 17d 46.5h
FINISH: Aged Silver / Aged Gold
- 3 BACCO FLOOR LAMP**
A contemporary take on a classic 1950s balance floor lamp. This striking piece can be adjusted for angle, height and light position and is made of solid brass and black/brown accents. Integral shade.
22w 39-48d 68-72h
FINISH: Polished Brass & Black/Brown Detail
- 4 BOBBLE LAMP**
A tall, elegant, spooled floor lamp finished in fool's gold or antique silver leaf with optional linen shade.
12w 12d 55h
FINISH: Antique Silver / Antique Gold (shown)
- 5 RICHTER FLOOR LAMP**
Beautiful and functional, with tripod base and three-way adjustable arm, the Richter lamp is wrapped in black or red pebble-grain leather with saddle-stitched detail.
24w 24d 71-81h Arm Length 35
FINISH: Black Leather / Red Leather (shown)
- 6 FLIP TABLE LAMP**
Loosely based on a paper clip design, this simple lamp is a statement on any desk. Available in aged brass (6) or clad in hand-stitched black (7) or red leather with a contrasting, articulating, aged brass shade.
12.5w 11d 21h
FINISH: Aged Brass / Red or Black Leather & Aged Brass

1 BACCO CHANDELIER
Inspired by Italian lighting designs of the 1950s, the Bacco chandelier features six articulating brass arms with steel shades. The Bacco captures the elegant industrial and functional qualities that defined designs of the mid-20th century.
68dia 35h
FINISH: Brass with Black / Cream Shades

2 SOHO LAMP
A faithful copy of a mid-20th century French swingarm wall lamp. Solid antique brass arm with cream shade.
SMALL
SHADE 14w 14d
BACKPLATE 2.5w 1d 12h
PROJECTION 30-34
LARGE
SHADE 17w 17d
BACKPLATE 3w 1d 24h
PROJECTION 51-53
FINISH: Antique Brass with Cream Shade

3 BACCO WALL SCONCE
This single-arm fixed wall lamp features a vertically adjustable arm and shade. The aged brass fittings contrast with the round backplate and sculptural shade.
22w 22d 12h
BACKPLATE 5.5w 5.5d
FINISH: Aged Brass with Black / Cream Shades

4 ALFIES LAMP
A stunning weighted lamp in solid brass, shown here in green finish. Can be used as a wall light, bedside light or sofa end lamp. Integral shade.
19w 32d
SHADE 18.5w 18.5d
PROJECTION 29
BACKPLATE 3w 2d 5.5h
FINISH: Aged Brass with Green Detail

5 NEPTUNE CHANDELIER
Inspired by the Sputnik style of the 1950s, this 10-light fixture exudes atomic age sophistication.
25dia 31h (with bulbs)
FINISH: Aged Brass with Black Detail

6 MOBILE CHANDELIER
Alexander Calder's mobile creations inspired this aged brass pendant with cantilevered arms which swivel independantly and can be arranged at will.
47w 47d 27.75h
FINISH: Aged Brass

7 JACOBS LANTERN
A simple, elegant metal frame lantern that works in almost any interior setting.
19.5dia 28h
FINISH: Dirty Gold / Dirty Silver

8 ANNA LANTERN
Adapted from our classic Anna series, a patinated steel frame fretwork chandelier with glass panels and pendant light fitting.
20.5w 20.5d 20.5h
FINISH: Dirty Gold / Dirty Silver

9 LUNA LANTERN
A fresh take on our popular Flip lamp, the Luna pendant is as whimsical as the original in its over-scaled simplicity.
16dia 19h
FINISH: Aged Brass





- 1

2

3
- TRIANGLE LANTERN

Rustic yet contemporary, the Triangle lanterns are available in three sizes with walnut or ocean-spray wood finishes and brass fittings.

(1) Extra Large 59.5w 19.5d 23.5h
(2) Large 19.5w 19.5d 23.5h
(3) Small 14w 14d 20h
FINISH: Walnut / Oceanspray



PALAZZO SQUARE MIRROR

A beautiful Venetian style mirror that has become another Chichester classic. An eglomisé frame with rosette detail surrounds an aged mirror inset.

Extra Large Square 79w 2d 79h (shown)

Large Rectangular 39.5w 2d 79h

Medium Rectangular 30w 2d 72h

Small Rectangular 36w 2d 55h

Mirrors

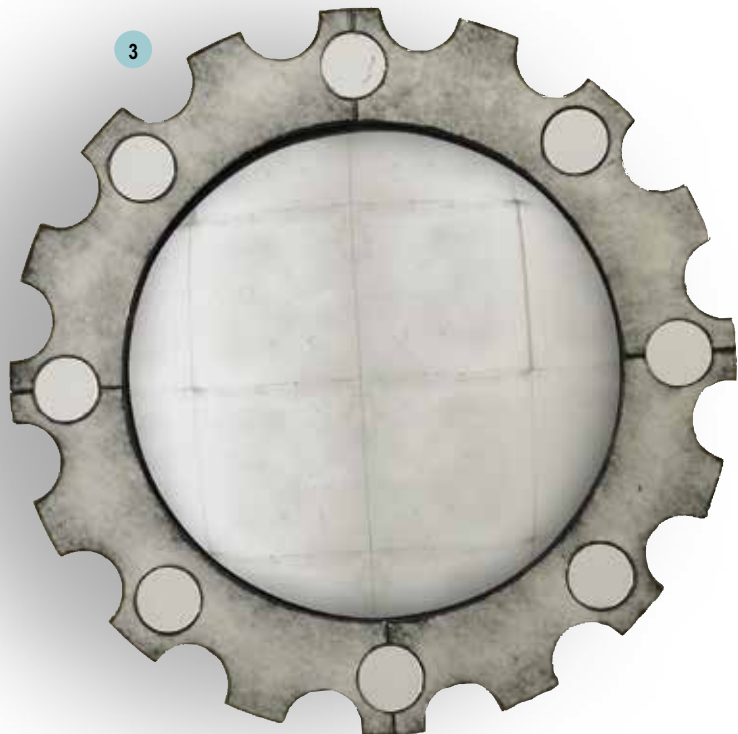


1 LYCEUM MIRROR
A concave circular frame in gilded faux shagreen and ivory or ochre vellum with a plain mirror inset. Vellum is a natural skin therefore colour variation is inevitable.
Overall 39dia 5.5d
Mirror Inset 29w



2 HOBBS MIRROR
An exceptional sunburst mirror with individually carved rays in natural white or gold gilt finish surrounding an convex eglomisé center.
Overall 39dia 2d
Mirror Inset 12w

3 RHAPSODY MIRROR
The indented aged mirror frame surrounding a convex eglomisé center was inspired by Jan van Eyck's painting of 'The Arnolfini Portrait'.
Small Overall 18dia 3d
Mirror Inset 12w
Large Overall 39dia 3d
Mirror Inset 28.5w





4



5



6

4

PUSHKIN MIRROR

A classic Art Deco shape simplified and updated with a brass-clad frame. Available in aged brass with an inset aged mirror.

31w 1d 55.5h

6

SEVILLE MIRROR

A spectacular silver leaf starburst mirror with forty individual rays around a convex eglomisé center.

Overall 39dia 2.5d

Mirror Inset 18.5w

5

HENNESSEY MIRROR

A notched aged brass frame that lends instant architecture to any room.

29.5w 1.5d 47.5h



1 GUITAR MIRROR
The guitar body shape of this mirror is accented with either a plain aged mirror frame, or an eglomisé frame with bubble detail (shown).
33.5w 1d 47.5h



3 QUEEN ANNE RECTANGULAR MIRROR
A faithful reproduction of a circa 1710 original, with either an aged antique or plain mirror center (shown).
39w 1.5d 49h
Mirror Inset 30w 40h



3



4



5



6

4

QUEEN ANNE TRADITIONAL MIRROR
A faithful reproduction of a circa 1710 original, with either an aged antique or plain mirror center (shown).
28w 1.5d 63h
Mirror Inset 21.5w

6

QUEEN ANNE ROUND MIRROR
A faithful reproduction of a circa 1710 original, with either an aged antique or plain mirror center (shown).
39dia 1.5d
Mirror Inset 30w

5

VIOLETTA MIRROR
Different sized aged mirror scrolls frame a plain mirror center in this lyrical composition.
32w 1d 48h



1 DAVENPORT MIRROR
Stately and formal, the Davenport mirror features a decorative aged mirror studded with aged brass, within a bleached ivory or black vellum frame (shown).

36w 1d 60h

2 GEORGIAN MIRROR
Classically proportioned early Georgian mirror in a contemporary waxed white oak finish with aged mirror inset.

25.5w 2d 51.5h



3 JANE CHURCHILL EBURY MIRROR
Designed by Jane Churchill, this stunning gothic-inspired mirror with a quatrefoil detail is based on a 20th century original. Available with an aged, plain or eglomisé mirror center and either a weather oak, fool's gold or Louis paint finish frame.

Small 36dia 2d

Large 47dia 2d





4



5

4 TEMPLE RECTANGULAR MIRROR
An elegantly simple raised central mirror with an eglomisé surround. Available in gold or antiqued silver leaf edging.
Overall 39w 3d 49h
Mirror Inset 26w 36h

5 ANNA MIRROR
A beautiful Arts and Crafts inspired plain mirror surrounded with an eglomisé backed bleached oak fretwork frame. Both sizes can be mounted either vertically or horizontally.
Standard Rect 36w 1d 53.5h
Mirror Inset 25.75w 43.25h
Large Rect 36w 1d 71.5h
Mirror Inset 25.5w 61h



6

6 TEMPLE SQUARE MIRROR
An elegantly simple raised central mirror with an eglomisé surround. Available in gold or antiqued silver leaf edging.
Small Square 30w 3.5d 30h
Mirror Inset 16w 16h



1 AGOSTINO MIRROR
A large scale, architectural, aged mirror center with a reeded, antiqued brass frame.
Overall 39.5w 1.5d 79h
Mirror Inset 33.5w 73h



2 PALAZZO MIRROR
A beautiful Venetian style mirror that has become another Chichester classic. An eglomisé frame with rosette detail surrounds an aged mirror inset.
Small Rectangular 36w 2d 55h (shown)
Medium Rectangular 30w 2d 72h
Large Rectangular 39.5w 2d 79h
Extra Large 79w 2d 79h

3 RANDOM MIRROR
A stacatto arrangement of aged mirror and eglomisé, the Random mirror creates a dazzling statement arranged as a pair or triptych.
Small 27.5w 1.25d 39.5h
Large 30.5w 1.25d 63h
Extra Large 79w 1.25d 79h





Occasional Tables



2



3

1 FELIX ROUND TABLE

A wonderfully simple, patinated, Frank metal framed side table, with ivory vellum, chocolate or ivory faux shagreen (2) top and shelf options. Antiqued silver leaf frame with aged mirror top and shelf (1) also available. Vellum is a natural skin therefore colour variation is inevitable.

24dia 26.5h
Bottom Shelf 4.25h

3 FELIX HALLWAY TABLE

A larger diameter interpretation of this simple, patinated, Frank metal framed table, with chocolate (2) or ivory faux shagreen top and shelf options. Vellum is a natural skin therefore colour variation is inevitable.

36dia 30h
Bottom Shelf 4.25h



- 1 TUBULAR SIDE TABLE**
The U-shaped bent steel legs finished in Frank metal support a brown (1) or ivory vellum top and lower shelf. Also available clad in beautifully saddle-stitched red leather (2) or black leather (3) with an aged mirror top and shelf.
- 23.5dia 24h
Bottom Shelf 19dia 10h
Between Shelves XXh



3



4



5

4 MID-CENTURY TROLLEY SIDE TABLE

This bent tubular steel side table, supports an eglomisé top and lower shelf (5). Also available clad in saddle-stitched red leather (4) or black leather (6), both with aged mirror top and shelf.

22w 28.5d 23h

Top Shelf 15.75w 20.25d

Bottom Shelf 19.5w 27.5d 12h

Between Shelves 11h



- 1 GARÇON SIDE TABLE**
A fabulous brass framed, 2-tier side table. The lower eglomisé shelf sits on a brown vellum plinth with brass detail.
19.75w 19.75d 24h
- 2 SAVOY SIDE TABLE**
Two vertical natural or black vellum-wrapped panels intersect with an eglomisé shelf and clear glass top in this sophisticated side table. The top edge and subtle arch detail are clad in aged brass. Vellum is a natural skin therefore colour variation is inevitable.
24w 23d 24h
- 3 DALI SIDE TABLE**
A stunning square sectioned vellum-wrapped side table with an eglomisé lower shelf and a clear glass top, available in bleached or black vellum. Vellum is a natural skin therefore colour variation is inevitable.
20w 20d 24h



4



5

4 PONTI SIDE TABLE
This octagonal occasional table is a contemporary interpretation of a classic Moroccan design. Finished in havana faux shagreen with contrasting brass detail.
21w 21d 24h

5 BERTRAND SIDE TABLE
Inspired by the sculptural furniture designs of Alberto Giacometti, this individual antique bronze finished side table has an inset aged mirror top.
24dia 26.5h

6 DUCK BILL SIDE TABLE
A laminated solid oak sculpted side table. The biomorphic forms are finished in either bleached or ebonised oak. This piece is manufactured with very thick dimensions of laminated oak so some movement or surface checking is possible.
15.5w 12d 23.5h



6



1 TRIBECA 3-TIER SIDE TABLE

Art Deco in origin, the Tribeca side tables are offered in two sizes and four finishes: chocolate faux shagreen with polished nickel details (1); ivory faux shagreen with aged brass details; dover white shagreen or bleached aged oak.

(1) Large 20dia 26h

(2) Small 14dia 26h

3 TRIBECA HALLWAY TABLE

Art Deco in origin, the Tribeca hallway table is offered in faux chocolate shagreen with polished nickel details or ivory faux shagreen with aged brass details (3).

36dia 30h

2



3





4



6



5

4 X-TABLE

A simple table with elegant Frank metal X-frame legs. Part of the Colourist Collection, finished to your specification.

23.5dia 23.5h

5 MR LOT TABLE

Mr Lot is a versatile occasional table with an exaggerated fluted motif that can also doubles as a footstool or place to perch during a party. Standard in gold leaf finish.

14dia 17.5h

6 MRS LOT TABLES

Mr Lot's zaftig companion, standard in luxurious black vellum or a durable off-white resin finish.

14dia 17.5h



Upholstery





Benches



2

1 AVELLINO BENCH

A sublimely sophisticated 1950's Scandinavian inspired bench, in a frame of hand-turned firmdale oak with brass ferrules on the legs. The semi-attached boxed cushion is available in COM, or our selection of velvets and linens.

Overall 47w 15.5d 22.25h

Seat 17h

COM 2 yds

2 LONDON BENCH

Based on a 1940's archetype, this elegant bench with tapered, carved legs and a tightly upholstered seat is available in a wide variety of standard wood finishes and upholstery options.

Overall 48w 16d 20h

Seat 19h

COM 2 yds

3 TEMPLE LONG BENCH

Part of the Temple series, this bench features a wood frame with inset eglomisé panels on all sides and a tightly upholstered seat cushion with folded French corners and button-tufted detail. Available in either gold leaf or antique silver leaf.

Overall 48w 14d 19h

Seat 19h

COM 2 yds



3

4 TEMPLE STOOL

Another option from the Temple series, this bench features a wood frame with inset eglomisé panels on all sides and a tightly upholstered seat cushion with folded French corners and button-tufted detail. Available in either gold leaf or antique silver leaf.

Overall 21.5w 22.5d 14h

Seat 15h

COM 1 yd per bench



4

1 RENE LONG BENCH
Art Deco inspired waterfall edge bench with tightly upholstered seat with folded French corners. Available in chocolate (1), ivory (2) or dover white faux shagreen with a silver leaf underside.
Overall 48w 14d 19h
Seat 19h
COM 2 yds

3 FELIX LONG BENCH
Simple and serene, the Felix bench looks great in any situation. The tight upholstered seat is standard with folded French corners and a button-tufted center detail on a Frank gold (3) or antiqued silver leaf frame.
Overall 48w 14d 19h
Seat 19h
COM 2 yds

4 AVELLINO DAYBED
A sublimely sophisticated 1950's Scandinavian inspired bench, the Avellino daybed is set in a frame of hand-turned firmdale oak with brass ferrules on the legs. The semi-attached boxed cushion is available in COM, or our selection of velvets and linens.
Overall 78w 32d 22h
Seat 19h
COM 10 yds

5 ZEBRA BENCH
6 Quintessentially 1950s in inspiration, the Zebra bench (5) and stool (6) are available in a variety of wood finishes and upholstery details, from COM to our broad selection of velvets and linens.
Bench Overall 51w 21d 21h
Seat 19h
COM 2 yds
Stool Overall 27w 21d 19.5h
Seat 17h
COM 1 yd





Chairs



SUGAR CHAIR

This low lounge chair is as stylish as it is comfortable. The frame utilizes a technique that was perfected by mid-century masters, but has Art Deco origins. The continuous arm is slightly concave and offered in a variety of standard finishes. The weltles boxed seat and back are available in COM or our selection of velvets and linens.

Overall 27w 33d 29h

Seat 17h Arm 23.5h

COM 3 yds



1 LAUREN CHAIR
An amply-scaled armchair with beautifully saddle stitched leather onto a low steel frame. Available in COM or our selection of velvets and linens.
Overall 25.5w 33.5d 34h
Seat 18.5h Arm 21.25h
COM 5 yds

2 TUBULAR CHAIR
A Bauhaus inspired arm chair updated with black saddle-stitched leather on a steel frame. Available in COM or our selection of velvets and linens.
Overall 24.75w 36d 32h
Seat 17.5h Arm 22h
COM 2 yds



1



1 CHAGAL CHAIR

The Danish sensibility of the Chagal chair lends its sensuous profile an air of panache. Available in white distressed walnut and COM or our selection of velvet and linens.

Overall 27.5w 31d 31h
 Seat 17h Arm 26.5h
 COM 3 yds

2 MARCS CHAIR

Our contemporary interpretation of a late 1940s French slipper chair offers sophistication and honest comfort. The chair is perfectly pitched in its angular wood frame, available in a variety of finishes and choice of COM, velvet or linen.

Overall 24.5w 28.5d 31.5h
 Seat 17h
 COM 3 yds

3 ALBERTO CHAIR

This low, deceptively simple, mid-century inspired chair is a feat in complex engineering with its cantilevered arms. The tight seat and back are contoured for comfort. Standard in white distressed walnut and COM or our selection of velvet and linens..

Overall 24.5w 26.5d 31.25h
 Seat 16h Arm 24.5h
 COM 3 yds

2







1

1 CLAREMONT CHAIR & OTTOMAN

This classic faux bamboo chair has a loose boxed upholstered seat and a loose back cushion, topped with a semi-attached bolster. Available in COM or a selection of linens and velvets. Matching upholstered ottoman also available.

Chair 27w 35d 40h

Seat 20h Arm 24.5h

COM 4.5 yds

Ottoman 27w 20d 14.5h

COM 1 yd

2 MATHIAS CHAIR & OTTOMAN

This sinuous and sexy chair is our version of a classic Swedish frame, updated to a scale more suited for today. The curvy frame is offered in a variety of standard wood finishes. Available in COM or a selection of linens and velvets. Matching upholstered ottoman also available.

Chair 26w 31d 35.5h

Seat 16h Arm 25h

COM 3 yds

Ottoman 26w 21d 15h

COM 1 yd

2





3



4

3 BLANCHARD CHAIR & OTTOMAN
 A spool-framed chair in a variety of standard wood finishes with an upholstered seat, back cushion and semi-attached bolster. Available in COM or a selection of linens and velvets. Matching upholstered ottoman also available.
 Chair 28.5w 33d 37.5h
 Seat 22h Arm 22.5h
 COM 3.75 yds
 Ottoman 24w 20d 13h
 COM 1 yd

4 POLLOCK CHAIR
 Low, wide and deep enough to curl up in, the Pollock chair is based on a 1964 original, with a frame in stainless steel or Frank metal finish. Available in COM or a selection of linens and velvets. Also available as a sofa.
 Overall 33w 34d 28h
 Seat 16h Arm 25h
 COM 6.5 yds



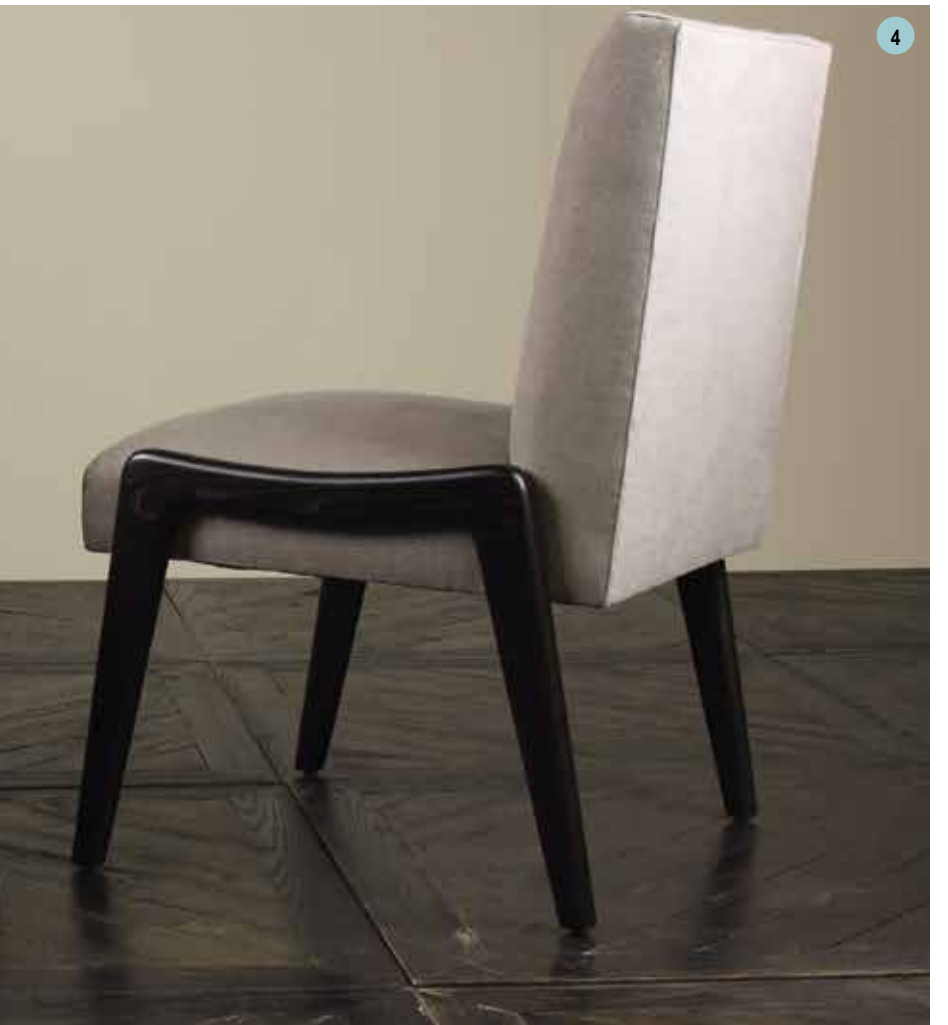
- 1 MONTEZ CHAIR**
 The low, angular lines and sweeping wide arms of the Montez chair create the perfect mix of mid-century style and comfort, updated by the three button detail and splayed brass-clad leg.
 Overall 31.5w 32d 35h
 Seat 17h Arm 18h
 COM 5 yds



- 2 EMMA CLUB CHAIR**
 The Emma's horn-shaped back legs and turned front legs nod simultaneously to the 19th and 20th centuries. The optional nailhead trim is available in aged brass or polished nickel. A variety of standard wood finishes are available, with upholstery in COM, velvet or linen.
 Overall 26w 30d 37h
 Seat 18h Arm 24h
 COM 4 yds

- 3 TURIN CHAIR**
 Pitched perfectly on sleek, sculptural cast brass legs, the Turin's sensual, enveloping contours are truly comfortable, matching the elegance of its mid-century Italian design aesthetic.
 Overall 28w 29.5d 36.5h
 Seat 16.5h Arm 25.5h
 COM 5 yds







5



6



7

1 KELSO CHAIR

The Kelso chair is an overscaled adaptation of a classic library wing chair, with a loose seat cushion and tightly upholstered inside back. Shown here with optional nail trim, available in brass or polished nickel. Standard in a variety of wood finishes.

Overall 32w 31d 44h

Seat 18h Arm 26h

COM 6 yds

2 WHITBY CHAIR

This contemporary wing chair comes tightly upholstered with a button detail on the inside back. The angular arms and legs are available in a variety of standard wood finishes.

Overall 24w 31d 45h

Seat 18h Arm 23.5h

COM 5 yds

3 ZEBRA CHAIRS

Quintessentially 1950s in inspiration, the Zebra arm (3) or side chair (4) are available in a variety of wood finishes and upholstery options, from COM to our broad selection of velvets and linens.

Arm Chair 26.5w 29d 35h

Seat 20h Arm 26.5h

COM 3 yds

Side Chair 24.5w 27d 37h

Seat 20h

COM 3 yds

5 KLINT CHAIRS

The Klint chair updates a 1930s original in scale and comfort. With a straightforward wood frame and slightly concave upholstered seat and back, Klint brings simplicity and timeless style to any dining table. Available as an arm (5) or side chair (6) in white distressed walnut and a variety of upholstery options.

Arm Chair 25.5w 24d 35h

Seat 19h Arm 27.5h

COM 3 yds

Side Chair 24w 22.5d 35h

Seat 19.5h

COM 3 yds

7 VIRGINIA CHAIR

A classic Julian Chichester hybrid chair, this modern adaptation is supremely comfortable with its cantilevered arm and tightly upholstered seat and back. Tapered round front legs and splayed back legs are offered in a variety of wood finishes.

Overall 27w 26d 34h

Seat 18h Arm 27h

COM 3.5 yds





1 LONDON CHAIR
This elegant dining chair has a tight seat and tall back with a rolled, pleated detail. The tapered front leg has a reeded detail in contrast to the inverted back leg. Available in a variety of wood finishes and in COM or a selection of velvets and linens.

Arm Chair 22.5w 26d 39h
Seat 20h Arm 26.5h
COM 3 yds
Side Chair 22.5w 26d 39h
Seat 20h
COM 2.5 yds

2 EMMA DINING & SIDE CHAIR
The Emma's horn-shaped back legs and turned front legs nod simultaneously to the 19th and 20th centuries. The optional nailhead trim is available in aged brass or polished nickel. A variety of standard wood finishes are available, with upholstery in COM, velvets and linens.

Dining Chair 22.5w 24d 38.5h
Seat 18.5h Arm 26h
COM 3.5 yds
Side Chair 21w 24.5d 38.5h
Seat 18.5h
COM 3 yds

3 LUCIA DINING CHAIR
This comfortable shield-back chair, with optional cut-out detailing, comes standard with self-welt on the frame. The wooden legs are available in a variety of finishes with upholstery offered in COM or a selection of velvets and linens.

Overall 22w 26d 38.5h
Seat 19h Arm 26.5h
COM 2 yds

4 SORRENTO DINING CHAIR
This keyhole dining chair is quintessentially English. Featuring round-tapered front legs and saber back legs with a tightly upholstered seat and back with no welt on the frame. Standard in a variety of wood finishes.

Overall 21w 25d 37h
Seat 19h Arm 26.5h
COM 2.5 yds

5 LUCCIO DINING CHAIR
The beautifully sculpted solid oak frame is inspired by a 20th century original, but Luccio is entirely fresh for today. Artful and simple, it is a timeless addition to any room. Available standard in firmdale oak or white distressed walnut with a wrapped or inset back.

Overall 23w 23d 31h
Seat 18h Arm 27.75h
COM 1 yds



1

1 LIBRARY SOFA

A contemporary adaptation of an early 19th century original with a bench seat cushion and tightly upholstered back and arms. The carved wood frame forms the curvilinear legs, finished with brass sabots on casters. Available in a variety of standard or custom finishes.

(1) 2-Seat 49w 29.5d 36.5h
Seat 20h Arm 25h
COM 7 yds
(2) 3-Seat 72w 29.5d 36.5h
Seat 20h Arm 25h
COM 10 yds



2



Sofas



3 POLLOCK SOFA

Low, wide and deep enough to curl up in, the Pollock sofa is based on a 1964 original, with frame in stainless steel or Frank metal finish. Available in COM or a selection of velvets and linens. Also available as a club chair.

Overall 63w 33d 27h

Seat 14h Arm 25h

COM 12 yds

4 BLANCHARD SOFA

Spool-framed sofa with upholstered seat, back cushion and semi-attached bolster. Available in a variety of standard wood finishes with COM or a selection of velvets and linens.

Overall 56.5w 33d 37.5h

Seat 21h Arm 22.5h

COM 7.5 yds

1 **EMMA SETTEE**

The Emma's horn-shaped back legs and turned front legs simultaneously nod to the 19th and 20th centuries. The optional nailhead trim is available in aged brass or polished nickel. A variety of standard wood finishes are available, with upholstery in COM, velvet and linen.

Overall 52.5w 30.5d 35.5h
Seat 18h Arm 24h
COM 8 yds



2 **KELSO LOVESEAT**

The Kelso loveseat is an overscaled adaptation of a classic library wing chair, with a loose seat cushion and tightly upholstered inside back. Shown here with optional nail trim, available in brass or polished nickel. Standard in a variety of wood finishes.

Overall 57w 30d 44h
Seat 20h Arm 26h
COM 9 yds



The Colourist collection

A selection of favourite Julian Chichester designs finished in the finest quality lacquer, in any colour you choose!

Paint matched to make your own statement piece.
Ask us for more details.



X-TABLE

A simple table with elegant Frank metal X-frame legs. Part of the Colourist Collection, finished to your specification.

23.5dia 23.5h



1 REGENCY DOUBLE WAVE CABINET
 A double length wave cabinet with two pairs of touch-latch doors. Two internal adjustable shelves on each side. Lacquer finished to your specification.
 Overall 84.5w 22d 33.5h
 Interior XXw XXd XXh

2 REGENCY SINGLE WAVE CABINET
 A single wave version of our popular Regency Wave cabinet. Three internal adjustable shelves. Lacquer finished to your specification.
 Overall 43w 22d 33h
 Interior XXw XXd XXh





3



4

3 ELGIN CABINET

This cabinet features an elegant, gently curved façade trimmed at the top and bottom in aged brass. Featuring four center drawers with brass pulls flanked by two large storage areas, each with two adjustable shelves. Lacquer finished to your specification.

Overall 79w 23.5d 32h

Interior Sides 25w 21d 25.5h

Interior Drawers 10.5w 15d

4 REGENCY WAVE CHEST

A stunning classically inspired wave fronted chest with contrasting brass handles. Lacquer finished to your specification.

43w 22d 33h



- 1 BESPOKE DAKOTA LACQUER TABLES**
Stunning Saarinen inspired tables with beautiful lines and oval or round wooden table tops. Any standard or custom size table top can be lacquer finished to your specification.
- Standard Oval Top 78w 39d
Large Oval Top 96w 48d
Extra Large Oval Top 120w 60d

All oval tops with STANDARD bases 30h
All oval tops with LARGE bases 29h

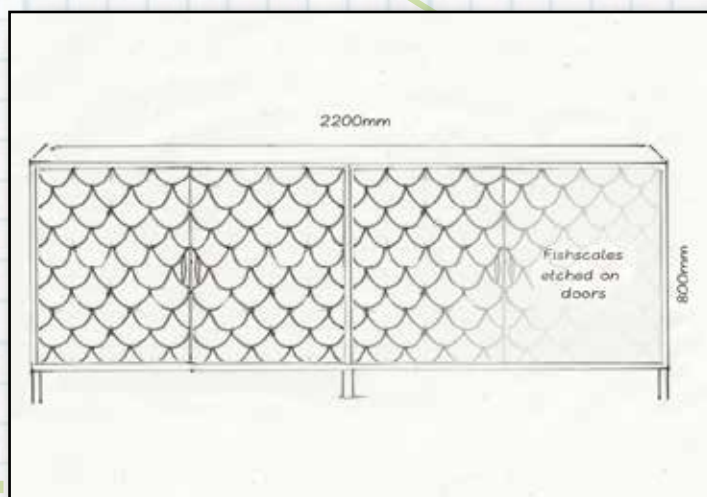
Standard Round Top 48dia
Large Round Top 54dia
Extra Large Round Top 60dia
Super Large Round Top 72dia

All round tops with STANDARD bases 30h
All round tops with LARGE bases 29h

- 2 DEMI FOUR-POSTER BED**
Unique demi four-poster bed of classical proportions, lacquer finished to your specification.
- Eastern King 77w 86d 65h
Queen 68w 86d 65h
SPECIAL ORDER ONLY

- 3 KLEE CABINET**
A clean lined cabinet with two adjustable shelves behind cerused oak doors. The outer frame is lacquer finished to your specification.
- Overall 59w 21d 31.5h
Interior Right 18w 18d 26.25h
Interior Left 37.5w 18d 26.25h





MADE TO MEASURE

'Off the peg' furniture is all very well, but what if you have an awkward space to fill or existing pieces that you wish to match in some way? Don't despair – Julian Chichester takes just that sort of bespoke work easily in their stride.



JULIAN CHICHESTER

Julian Chichester has been making bespoke furniture for over 20 years. As demand for one-off pieces continues to grow, the company thrives on meeting these desires. Our in-house design team and fabrication capacity exceed expectation, from inspiration through to execution.

We understand that our furniture does not always tick every box, so we can customise existing designs to suit individual needs or work with clients who require a completely bespoke model. We relish achieving unusual results – it's an exciting, innovative and rewarding process. Clients' needs and how to resolve them within budget are the engine of our creativity. For more information visit our website:

www.julianchichester.com

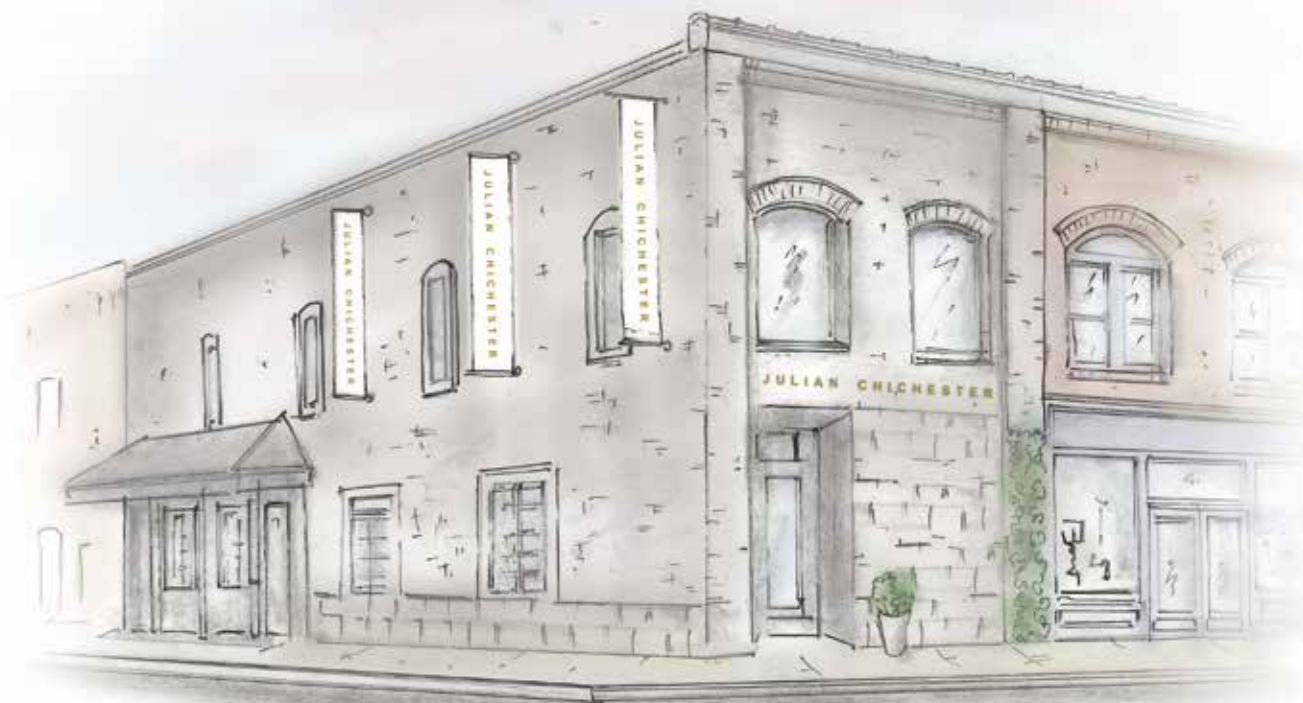
New York Showroom

New York Design Center, 200 Lexington Avenue, Suite 604, New York NY 10016



High Point Showroom

118 E Kivett Drive, High Point, NC 27263



TERMS & CONDITIONS

Descriptions and illustrations of any goods or materials are intended to be only a general representation thereof and are not intended to be reliable with regard to details or colouring.

All measurements are approximate Width x Depth x Height. Prices for special sizes are available upon request. All items must be ordered in writing using the codes listed herein.

Please read our full terms and conditions, available upon request.

COPYRIGHT

Copyright for all material in this document, in print, in digital format or online, including, without limitation, text, logos, photographs and all other artwork, is copyright material of Julian Chichester. Permission to copy or otherwise use such material must first be obtained from the author.

WITH GRATEFUL THANKS

Mr Brown London for supplying lamps.

Photography by Johnny Pilkington,
Anders Gramer & Greg Browning.

Outer Covers © Stephen Frink / CORBIS

© Julian Chichester 2015

BROCHURE DESIGNED BY

Velvet

+44 (0)8456 434 101



New York

☎ +1 (646) 293 6622

✉ sales@julianchichesterusa.com

🐦 [@jchichesterusa](https://twitter.com/jchichesterusa)

High Point

☎ +1 (336) 886 2454

✉ sales@julianchichesterusa.com

🐦 [@jchichesterusa](https://twitter.com/jchichesterusa)



J U L I A N C H I C H E S T E R

BACK COVER
FOIL BLOCK ONLY
SHINY GOLD

J U L I A N C H I C H E S T E R

FRONT COVER
FOIL BLOCK ONLY
SHINY GOLD

SPINE TO TRIM TO
SIZE, DEPENDING
ON THICKNESS OF
BROCHURE

LOGO TEXT IN
SHINY GOLD
FOIL BLOCK